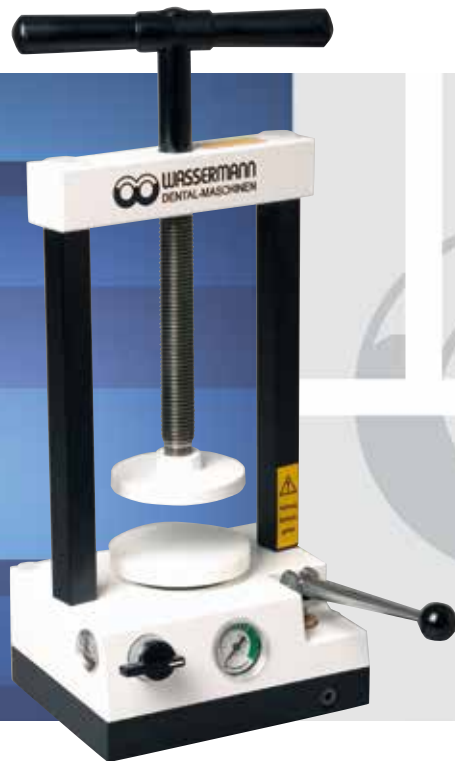


● **HYDRAULIC PRESS****WW-33**

The correct pressure day after day

**Technical information**

Safe, infinitely adjustable and incredibly strong: Finally, the correct pressure for your flasks with the WW 33 hydraulic press. Designed for daily use, with a working pressure that can be adjusted up to 6 tonnes – for the correct pressing of 1–3 or 2–4 flasks. And so efficiently, thanks to the valve which can be opened to allow the piston to return to its starting position automatically – ready again for operation without losing time. Of course, the oxidation-free piston is made of super-strong material, as is the indestructible design in drawn steel. The Wassermann credo: Safety from tradition!

- break-resistant hydraulic press in drawn steel for pressing 1–3 or 2–4 flasks
- pressure infinitely adjustable up to 6 tonnes
- oxidation-free piston in super-strong material
- automatic piston return after valve opening
- quality pressure gauge with precision display recessed in housing
- support separation of 152 mm to allow use of larger flasks and flask clamps
- high stability, integrated oil level display

## ● Technical data and accessories

<b>WW-33, 2–4 flasks</b>	<b>Item no.: 126998</b>
<b>WW-33, 1–3 flasks</b>	<b>Item no.: 126999*</b>
WxD/ D incl. pump lever	200 x 158 / 295 mm
Distance between columns	152 mm
Distance plunger plate	max. 272 / min. 102 mm max. 212 / min. 42 mm*
Weight	16.0 kg, 14.7 kg*
Working pressure	up to 6 tons
Working table	Ø 95 mm

Accessories	Item no.:
Universal flask	129990
Special steel tension bracket for 3 flasks	129992
Special steel tension bracket for 2 flasks	129993
Special steel tension bracket for 1 flask	129994
Universal flask bracket for 3 flasks	129995
Universal flask bracket for 2 flasks	129996
Universal flask bracket for 1 flask	129997
Hydraulic oil 500 ccm	629005

Technical changes reserved



WW-33 1-3 flasks



Special steel tension bracket



Universal flask bracket

### Major features at a glance WW-33

- fracture-resistant hydraulic press is made of drawn steel with oxidation-free piston
- working pressure infinitely adjustable up to 6 tonnes
- automatic piston return
- suitable for larger flasks and flask clamps
- housing plastic-powder-coated

[www.wassermann-dental.com](http://www.wassermann-dental.com)